

Epordo E-FOCUS INDUSTRIAL CO., LIMITED

Address: 501, Block Four, ChuangYe Industrial Park, Long Hua Town, Bao An District, Shenzhen, China

Tel: +86-755 88257909 / 83418779 www.securitcn.com Fax: +86-755-88250226



E-mail: efocus008@securitcn.com





MSN: Efocus008@hotmail.com

Contact: Luke Zhang

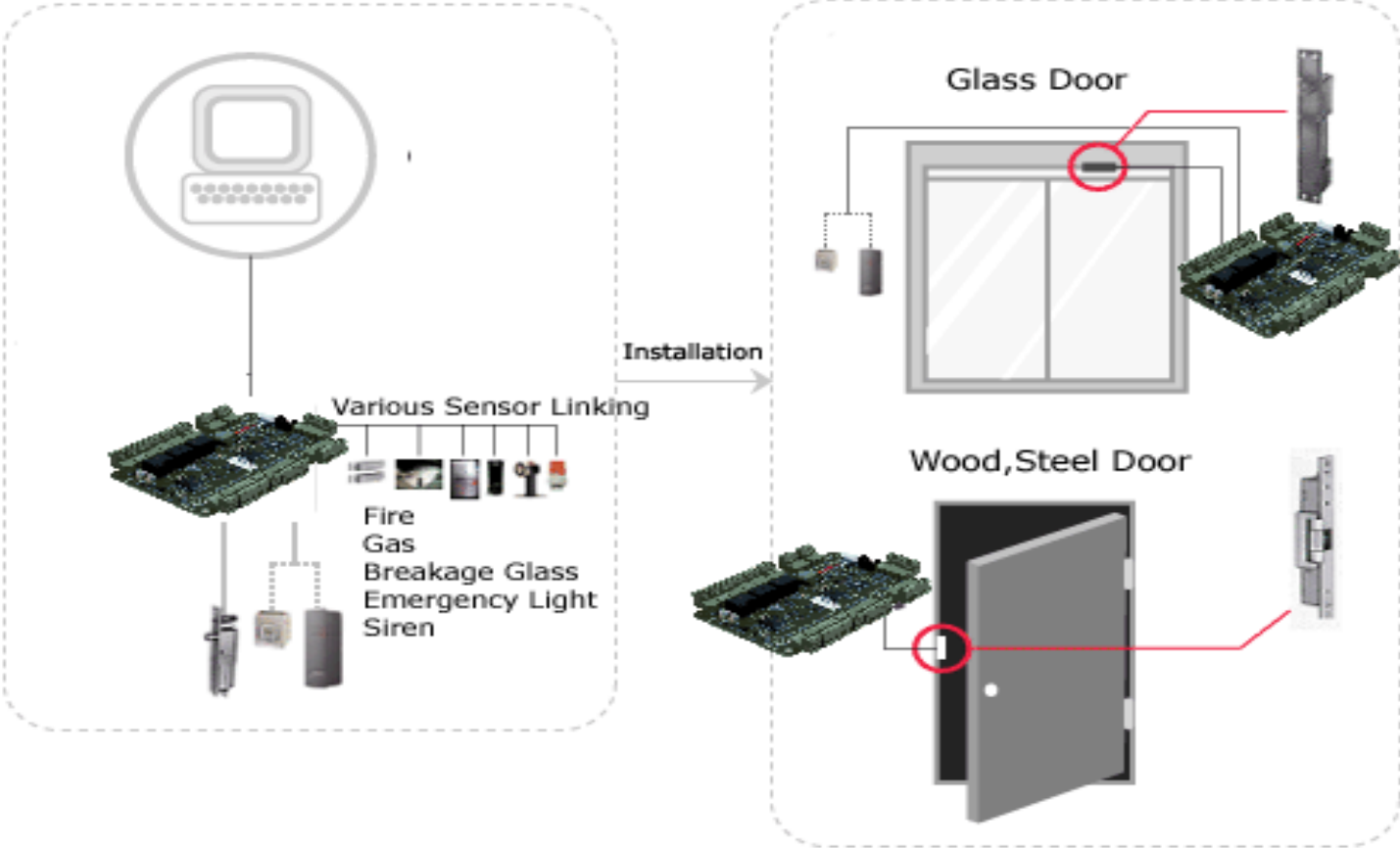
Expiration Date: 2010-12-30

Access Control Panel Catalogue Sheet

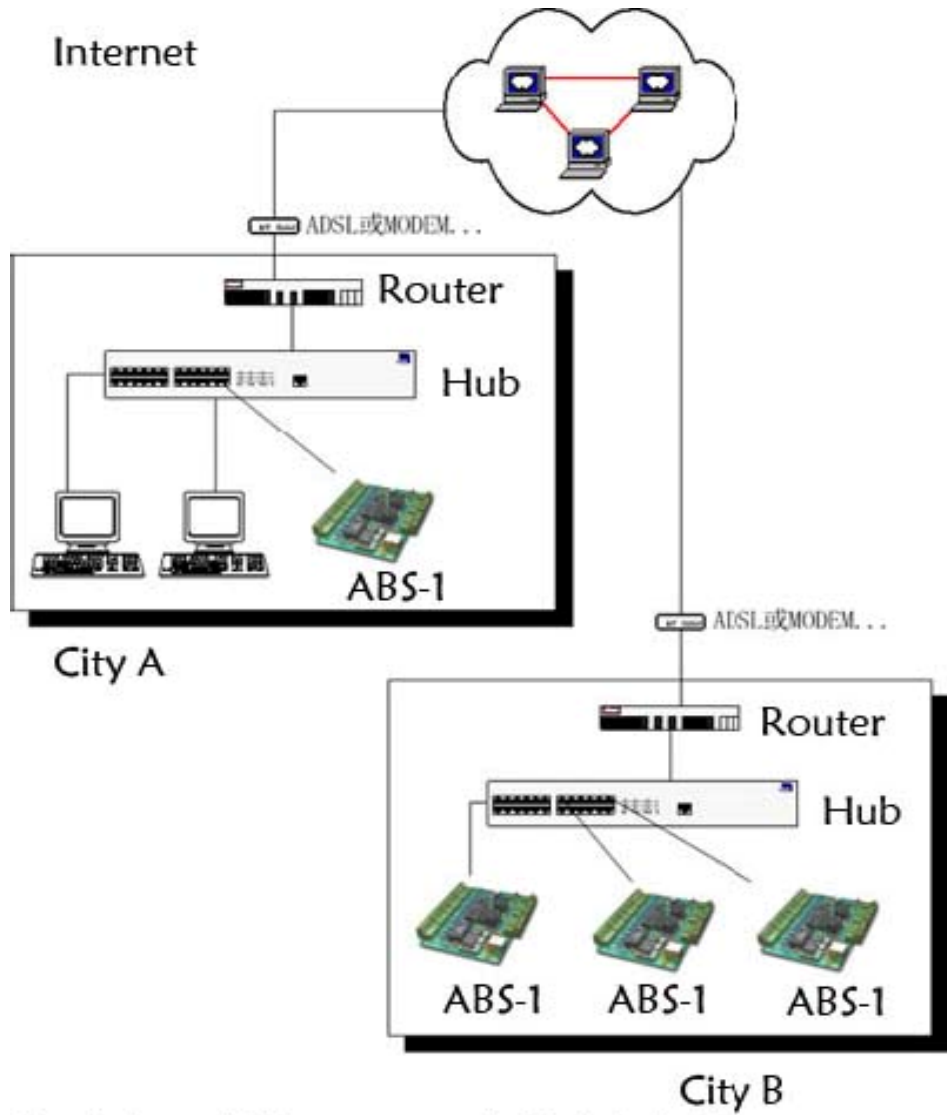
Picture	Model	Main Feature
	ABS-1	Capable to handle 1 doors / 2 readers with a single controller; Network Communication via RS232 / RS485 ; Control of Memory up to 20,000 Users / up to 100,000 Event Buffers; Support 1 relays output for controlling switch signal; With Uninterruptible Power Supply interface; Support opening door button; Anti-pass back Function; Storage capacity: 20,000 cards and 100,000 records Or 60,000 cards and 60,000 records; Support SDK
	ABS-2	Capable to handle 2 doors / 4 readers with a single controller; Network Communication via RS232 / RS485 ; Control of Memory up to 20,000 Users / up to 100,000 Event Buffers; Support 2 relays output for controlling switch signal; With Uninterruptible Power Supply interface; Support opening door button; Anti-pass back Function; Storage capacity: 20,000 cards and 100,000 records Or 60,000 cards and 60,000 records; Support SDK

	<p>ABS-4</p>	<p>Capable to handle 4 doors / 4 readers with a single controller; Network Communication via RS232 / RS485 ; Control of Memory up to 20,000 Users / up to 100,000 Event Buffers; Support 4 relays output for controlling switch signal; With Uninterruptible Power Supply interface; Support opening door button; Anti-pass back Function; Storage capacity: 20,000 cards and 100,000 records Or 60,000 cards and 60,000 records; Support SDK</p>
	<p>ABS-1. Net</p>	<p>Capable to handle 1 doors / 2 readers with a single controller; Network Communication via TCP/IP ; Control of Memory up to 20,000 Users / up to 100,000 Event Buffers; Support 1 relays output for controlling switch signal; With Uninterruptible Power Supply interface; Support opening door button; Anti-pass back Function; Storage capacity: 20,000 cards and 100,000 records Or 60,000 cards and 60,000 records; Support SDK</p>
	<p>ABS-2. Net</p>	<p>Capable to handle 2 doors / 4 readers with a single controller; Network Communication via TCP/IP ; Control of Memory up to 20,000 Users / up to 100,000 Event Buffers; Support 2 relays output for controlling switch signal; With Uninterruptible Power Supply interface; Support opening door button; Anti-pass back Function; Storage capacity: 20,000 cards and 100,000 records Or 60,000 cards and 60,000 records; Support SDK</p>
	<p>ABS-4. Net</p>	<p>Capable to handle 4 doors / 4 readers with a single controller; Network Communication via TCP/IP ; Control of Memory up to 20,000 Users / up to 100,000 Event Buffers; Support 4 relays output for controlling switch signal; With Uninterruptible Power Supply interface; Support opening door button; Anti-pass back Function; Storage capacity: 20,000 cards and 100,000 records Or 60,000 cards and 60,000 records; Support SDK</p>

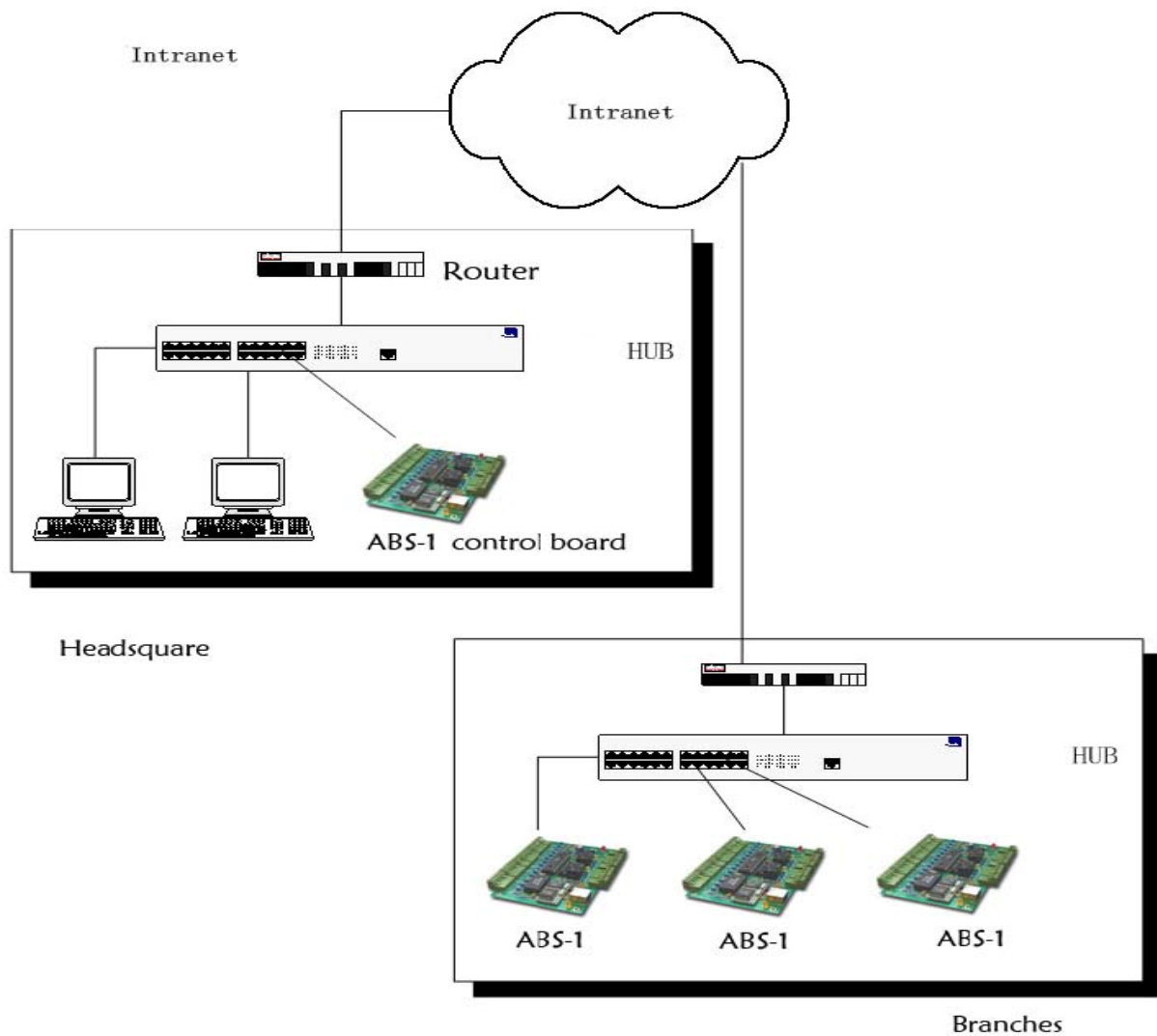
Integrated/Connection Diagram



Case Study(Connection)



Use internet, You can control global sites



To realize the center access control, attendance, & Alarm management across different sites via Corporation Intranet

LAN

